



The Miverton

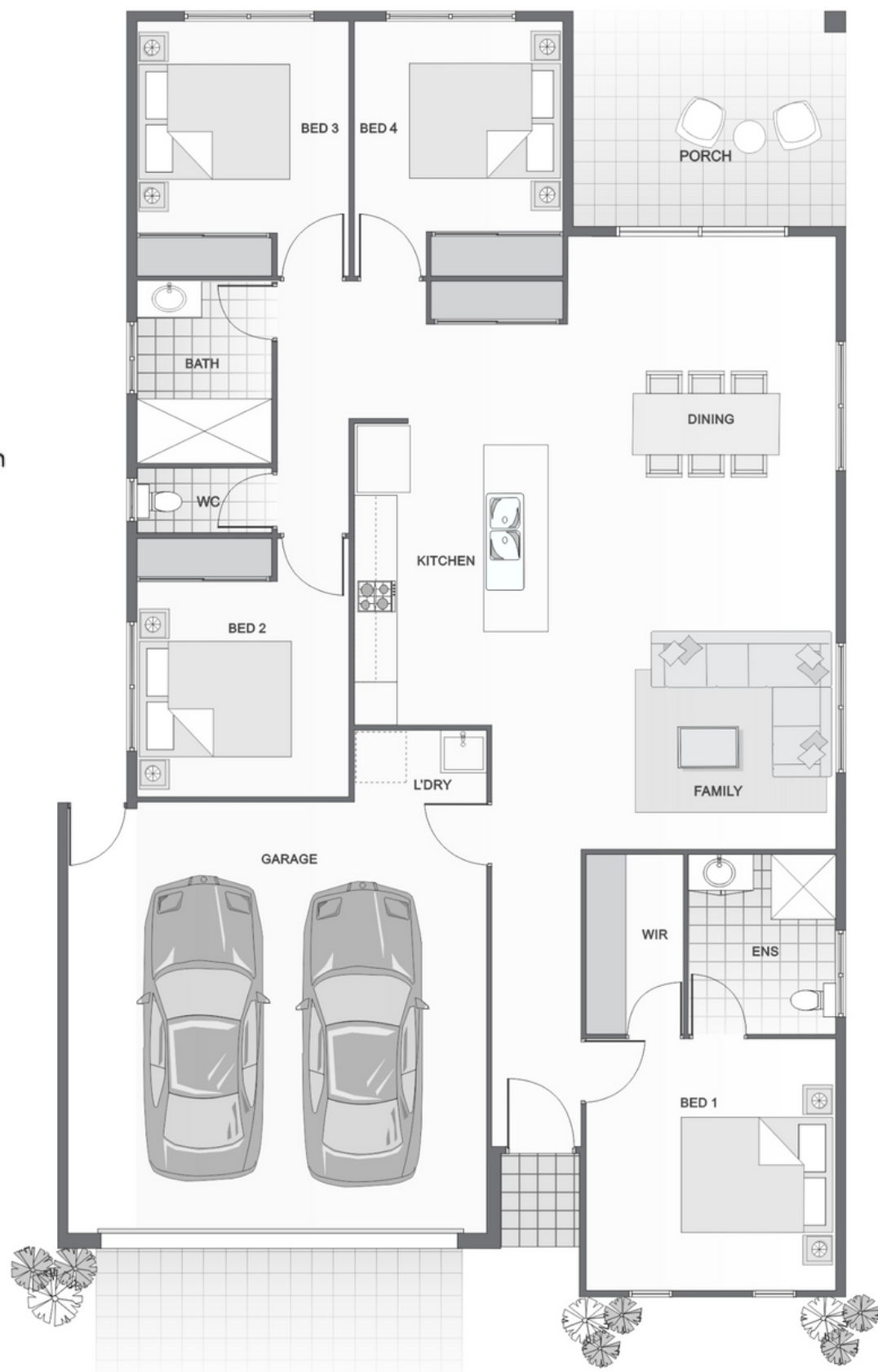
Perfect blend of form and function



- Efficient 4 bedroom design with central kitchen, open plan living areas, and secondary wing.
- Large island bench with breakfast bar
- Entering through the front door, the house flows through the kitchen straight out to your private outdoor entertaining area.
- Private master suite situated away from the secondary bedroom and featuring large walk-in-robe and ensuite.

This Ellis Development home also features:

- Front yard landscaping including turf, planting and irrigation
- Exposed aggregate driveway & tiled porch
- LED Downlights to kitchen, living and dining
- Chrome mixer tapware
- Stainless steel appliances
- Soft-close kitchen cabinetry
- Split System air conditioning to all bedrooms and living areas
- Ceiling fans to all bedrooms and living areas
- Tiles to all living areas
- Carpet to bedrooms
- Colorbond roofing
- Mirrored robes to bedrooms
- Electric hot water system
- Security screens on all windows sliding doors
- Termimesh termite prevention system
- 7 year structural warranty
- Driveway, clothesline, mailbox, & NBN included
- Up to H2 soil and C2 wind classification



www.EllisDevelopments.com.au